



# O U T S I D E

Material.	Glazed porcelain rectified
Sizes.	61x61 - 60x90 - 30x122
Thickness.	20 mm
Finish.	Grip
Colours.	Cream, Grey, Dark (Stone) Beige, Grigio, Antracite (Beton) Sabbia, Perla, Grafite (Hi-Line) Quercia, Cedar, Bianco, Pino (Plank)
Accessories.	Items available
Application.	Outside / Floor



PLANK



BETON



Outside  
Floor / **Beton Grigio** · 61x61

Inside  
Floor / **EVOQUE Coal** · 60x60



STONE



Outside  
Floor / Stone Cream · 60x90

Inside  
Floor / DES ALPES Beige · 47,8x97



Floor / Stone Cream · 61x61

# OUTSIDE



Glazed porcelain rectified



## CARATTERISTICHE TECNICHE

Technical features

Caracteristiques techniques

Technische Eigenschaften

Технические характеристики

**BETON**

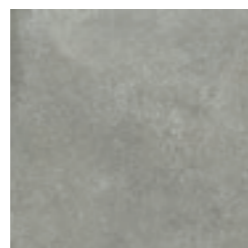
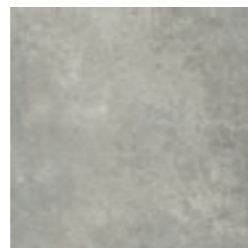


**BEIGE**



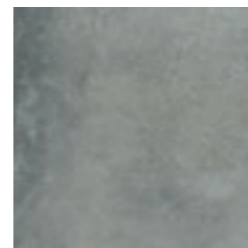
65 **112000** Beton Beige  
61x61 **GRIP**

**GRIGIO**



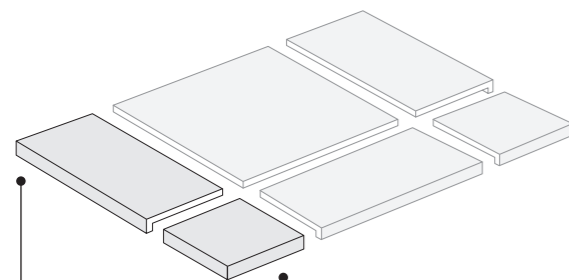
65 **112001** Beton Grigio  
61x61 **GRIP**

**ANTRACITE**



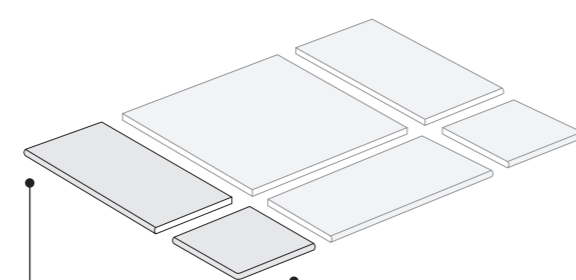
65 **112002** Beton Antracite  
61x61 **GRIP**

**PEZZI SPECIALI** / Special pieces / Pièces spéciales / Sonderstücke / Специальные изделия



94 Elemento a L  
30x61x5  
(lato 61)  
**11230-**  
Beton Beige  
**11231-**  
Beton Grigio  
**11232-**  
Beton Antracite

94 Elemento a L  
Angolare  
30x30x5  
**11242-**  
Beton Beige  
**11243-**  
Beton Grigio  
**11244-**  
Beton Antracite



96 Gradino  
30x61  
(lato 61)  
**11260-**  
Beton Beige  
**11261-**  
Beton Grigio  
**11262-**  
Beton Antracite

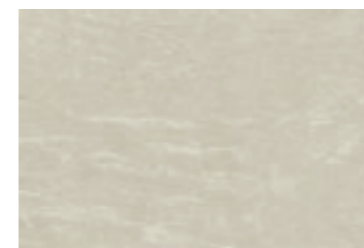
96 Gradino  
Angolare  
30x30  
**11270-**  
Beton Beige  
**11271-**  
Beton Grigio  
**11272-**  
Beton Antracite



**HI-LINE**

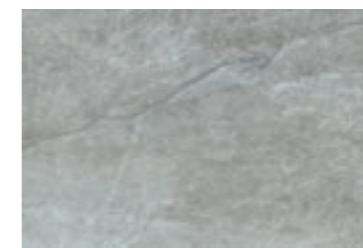


**SABBIA**



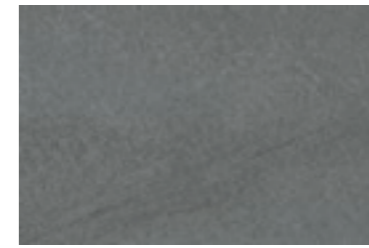
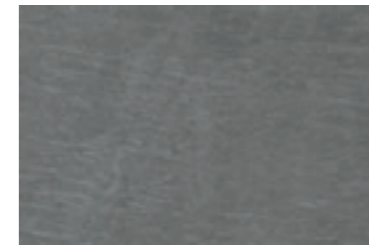
63 **111050** Hi-Line Sabbia  
60x90 **GRIP**

**PERLA**



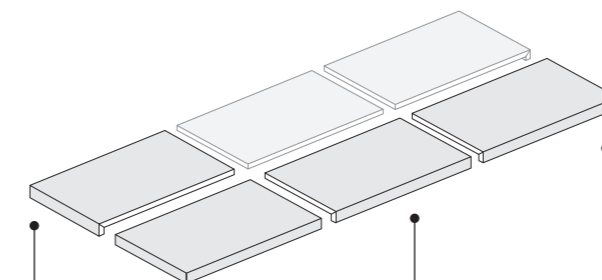
63 **111052** Hi-Line Perla  
60x90 **GRIP**

**GRAFITE**



63 **111053** Hi-Line Grafite  
60x90 **GRIP**

**PEZZI SPECIALI** / Special pieces / Pièces spéciales / Sonderstücke / Специальные изделия

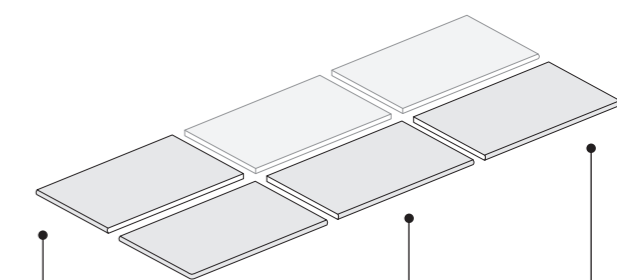


82 Elemento a L  
60x90x5  
(lato 60)  
**11133-**  
Hi-Line Sabbia  
**11134-**  
Hi-Line Perla  
**11135-**  
Hi-Line Grafite

110 Elemento a L  
Angolare A  
60x90x5  
**11146-**  
Hi-Line Sabbia  
**11147-**  
Hi-Line Perla  
**11148-**  
Hi-Line Grafite

82 Elemento a L  
60x90x5  
(lato 90)  
**11130-**  
Hi-Line Sabbia  
**11131-**  
Hi-Line Perla  
**11132-**  
Hi-Line Grafite

110 Elemento a L  
Angolare B  
60x90x5  
**11149-**  
Hi-Line Sabbia  
**11150-**  
Hi-Line Perla  
**11151-**  
Hi-Line Grafite



94 Gradino  
60x90  
(lato 60)  
**11143-**  
Hi-Line Sabbia  
**11144-**  
Hi-Line Perla  
**11145-**  
Hi-Line Grafite

82 Gradino  
Angolare A  
60x90  
**11152-**  
Hi-Line Sabbia  
**11153-**  
Hi-Line Perla  
**11154-**  
Hi-Line Grafite

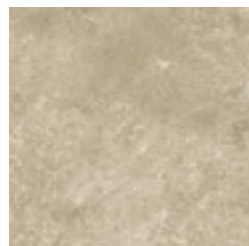
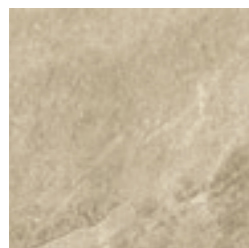
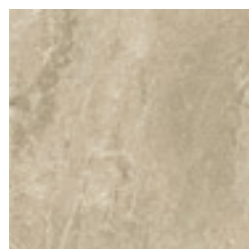
94 Gradino  
60x90  
(lato 90)  
**11140-**  
Hi-Line Sabbia  
**11141-**  
Hi-Line Perla  
**11142-**  
Hi-Line Grafite

82 Gradino  
Angolare B  
60x90  
**11155-**  
Hi-Line Sabbia  
**11156-**  
Hi-Line Perla  
**11157-**  
Hi-Line Grafite



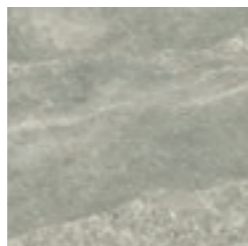
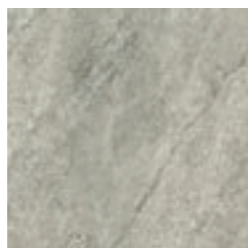
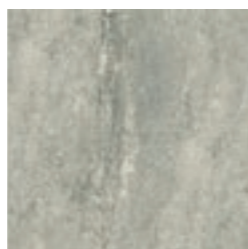
# STONE

## CREAM



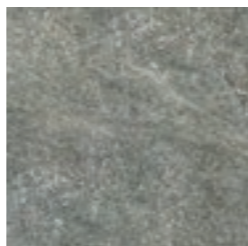
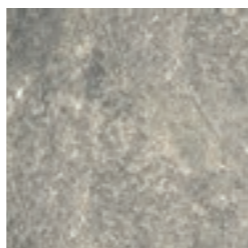
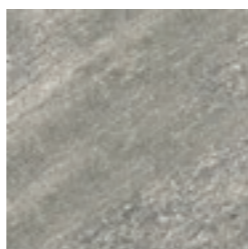
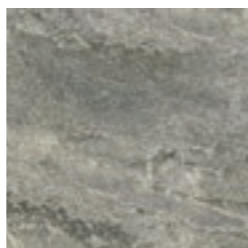
65 112003 Stone Cream  
61x61 GRIP

## GREY



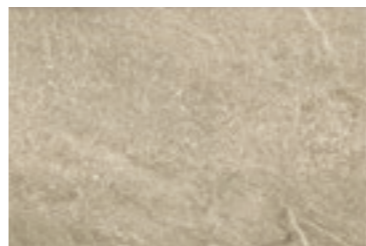
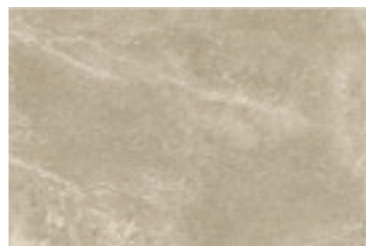
65 112004 Stone Grey  
61x61 GRIP

## DARK



65 112005 Stone Dark  
61x61 GRIP

## CREAM



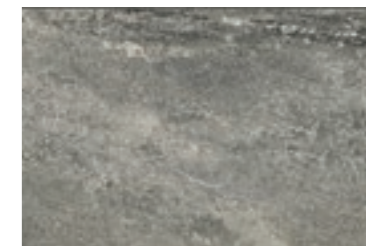
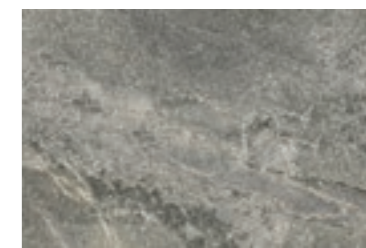
63 112009 Stone Cream  
60x90 GRIP

## GREY



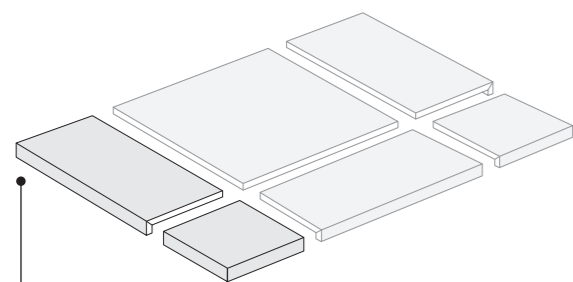
63 112010 Stone Grey  
60x90 GRIP

## DARK



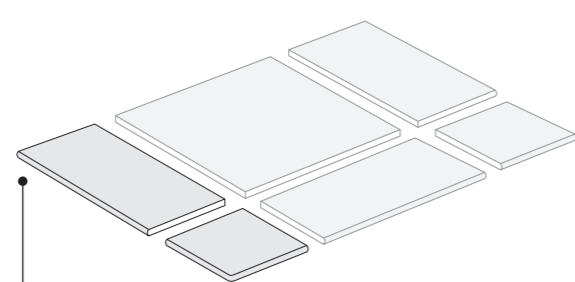
63 112011 Stone Dark  
60x90 GRIP

### PEZZI SPECIALI / Special pieces / Pièces spéciales / Sonderstücke / Специальные изделия



94 Elemento a L  
30x61x5  
(lato 61)  
11233-  
Stone Cream  
11234-  
Stone Grey  
11235-  
Stone Dark

94 Elemento a L  
Angolare  
30x30x5  
11245-  
Stone Cream  
11246-  
Stone Grey  
11247-  
Stone Dark

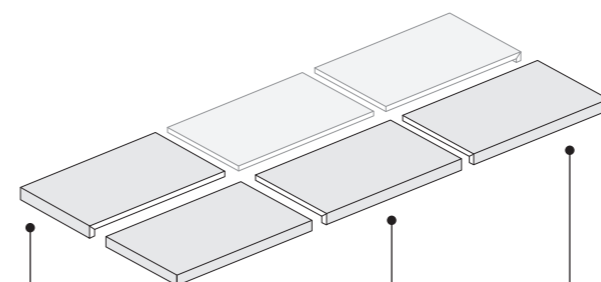


96 Gradino  
30x61  
(lato 61)  
11263-  
Stone Cream  
11264-  
Stone Grey  
11266-  
Stone Dark

96 Gradino  
Angolare  
30x30  
11273-  
Stone Cream  
11274-  
Stone Grey  
11275-  
Stone Dark



### PEZZI SPECIALI / Special pieces / Pièces spéciales / Sonderstücke / Специальные изделия

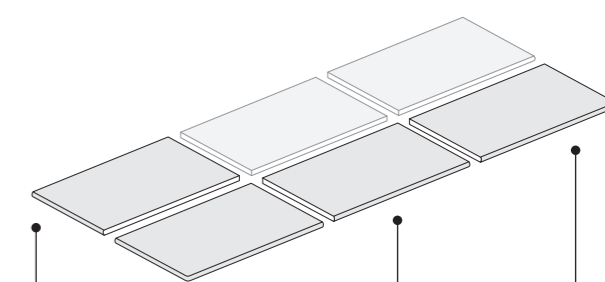


82 Elemento a L  
60x90x5  
(lato 60)  
11239-  
Stone Cream  
11240-  
Stone Grey  
11241-  
Stone Dark

110 Elemento a L  
Angolare A  
60x90x5  
11248-  
Stone Cream  
11249-  
Stone Grey  
11250-  
Stone Dark

82 Elemento a L  
60x90x5  
(lato 90)  
11236-  
Stone Cream  
11237-  
Stone Grey  
11238-  
Stone Dark

110 Elemento a L  
Angolare B  
60x90x5  
11251-  
Stone Cream  
11252-  
Stone Grey  
11253-  
Stone Dark



94 Gradino  
60x90  
(lato 60)  
11276-  
Stone Cream  
11277-  
Stone Grey  
11278-  
Stone Dark

82 Gradino  
Angolare A  
60x90  
11280-  
Stone Cream  
11281-  
Stone Grey  
11282-  
Stone Dark

94 Gradino  
60x90  
(lato 90)  
11267-  
Stone Cream  
11268-  
Stone Grey  
11269-  
Stone Dark

82 Gradino  
Angolare B  
60x90  
11283-  
Stone Cream  
11284-  
Stone Grey  
11285-  
Stone Dark

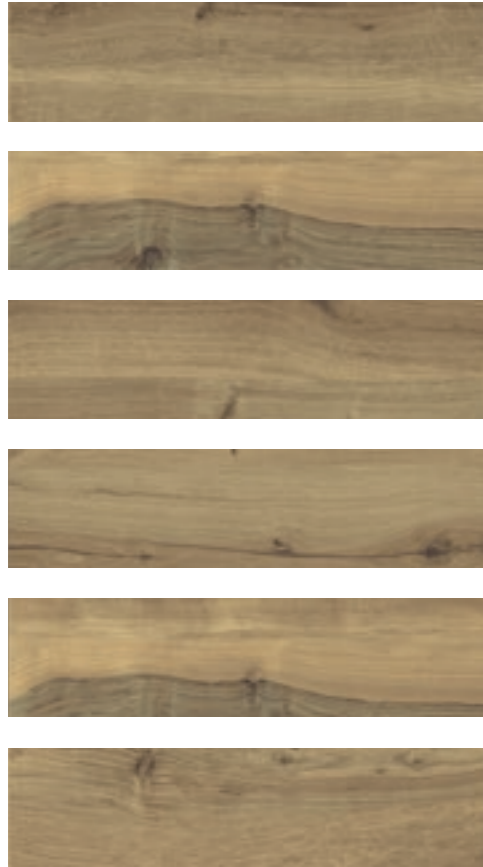




PLANK



QUERCIA



97 119201 Quercia 30x122 GRIP

PINO



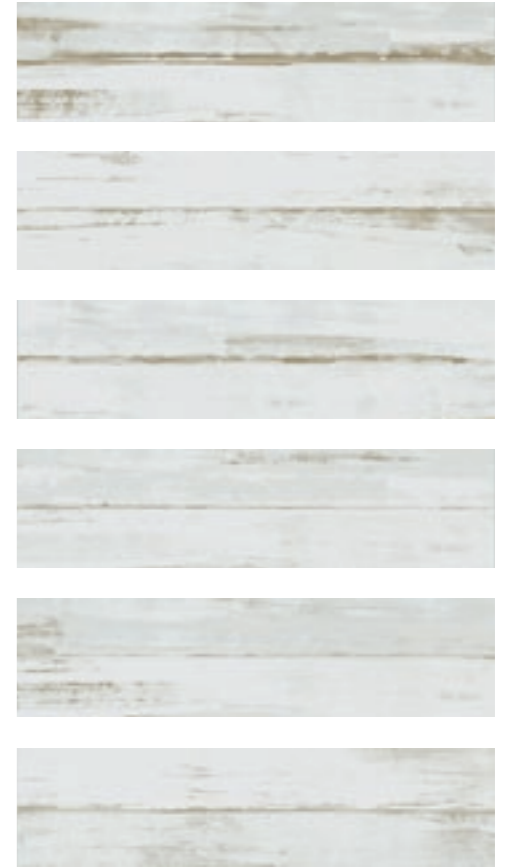
97 119204 Pino 30x122 GRIP

CEDAR



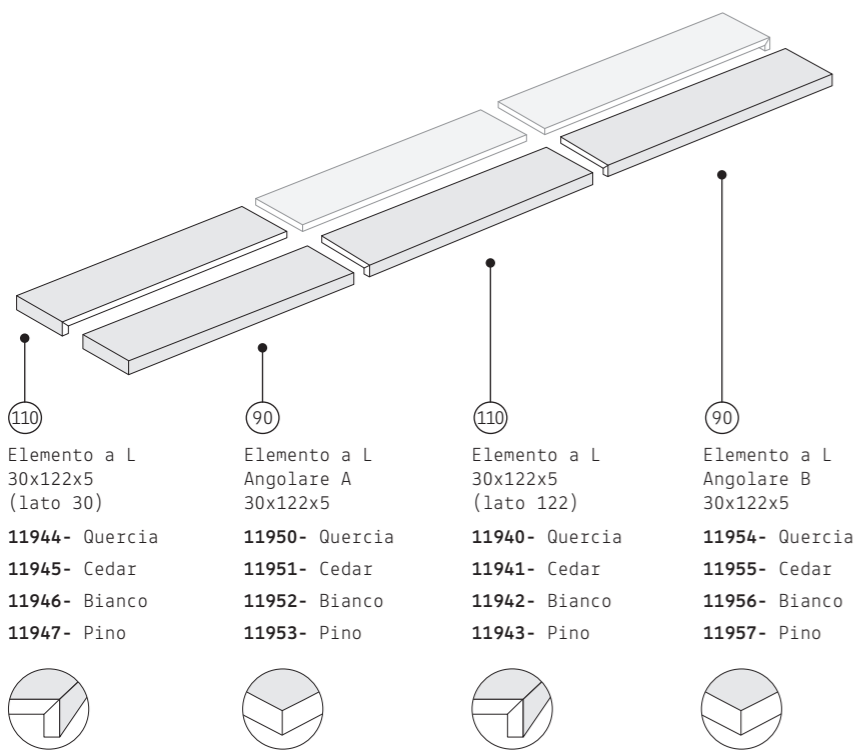
97 119202 Cedar 30x122 GRIP

BIANCO

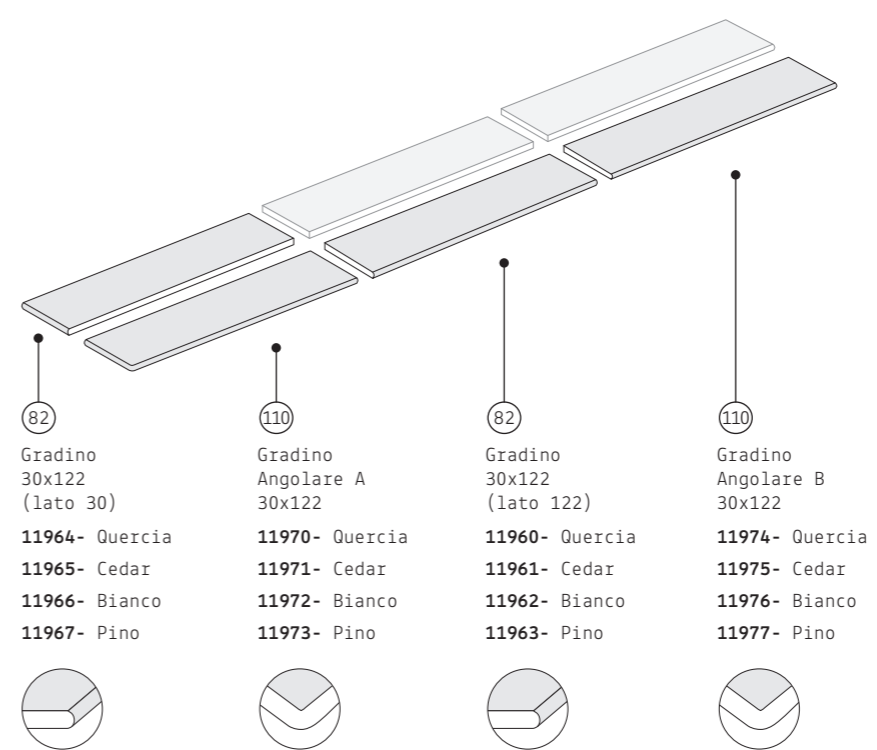


97 119203 Bianco 30x122 GRIP

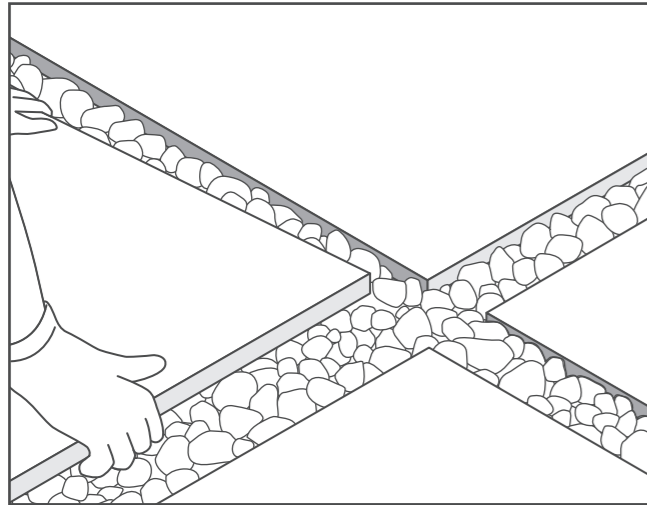
PEZZI SPECIALI / Special pieces / Pièces spéciales / Sonderstücke / Специальные изделия



PEZZI SPECIALI / Special pieces / Pièces spéciales / Sonderstücke / Специальные изделия



**A SECCO SU GHIAIA O SABBIA** · Dry installation on gravel and sand



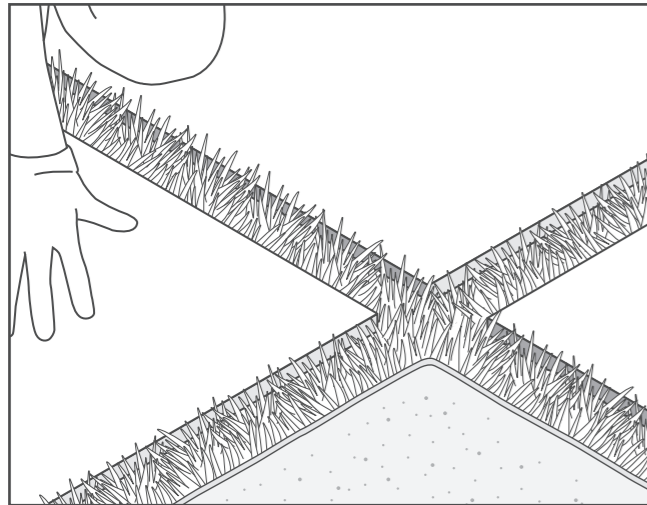
L'installazione è libera. Si posiziona la piastrella appoggiandola senza bisogno di collanti. La soluzione consente di rimuovere e riposizionare la pavimentazione in qualsiasi momento. La ghiaia garantisce un ottimo drenaggio dell'acqua piovana.

This solution allows you to freely remove and reposition the tiles at any time, as they are simply placed on the ground without adhesives. The gravel ensures excellent drainage of rainwater.

**Suggerimenti · Tips**

- 1 Spiana la superficie sottostante.  
Flatten the surface of the foundation.
- 2 Scegli la posa e disponi le piastrelle sul terreno.  
Choose the pattern and arrange the tiles on the ground.
- 3 Distanzia le piastrelle in modo uniforme.  
Space the tiles evenly.

**A SECCO SU ERBA** · Dry installation on grass



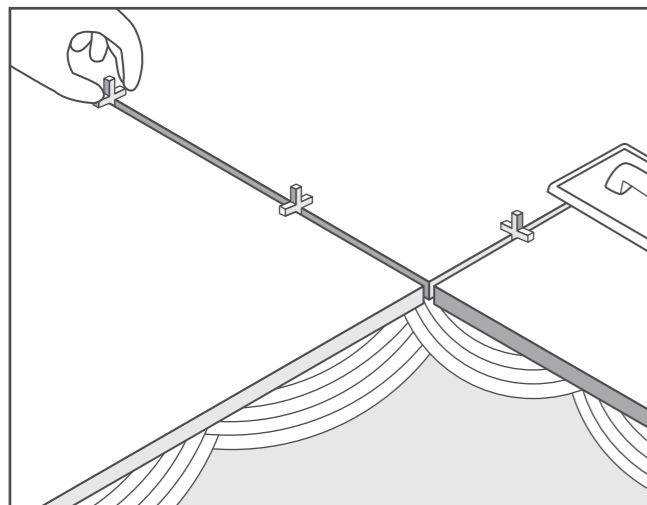
L'installazione è libera. In presenza di manto erboso è possibile appoggiare le piastrelle sul terreno senza collanti, oppure incassarle al livello del prato per facilitare il passaggio della falciatrice e limitare il rischio di inciampo.

Tiles can be placed on the turf without adhesives, or recessed at lawn level to facilitate mower passage and limit the risk of tripping.

**Suggerimenti · Tips**

- 1 Appoggia le piastrelle sul terreno e tracciane il perimetro, poi scava 5mm.  
Lay the tiles on the ground and trace the perimeter, then dig 5mm.
- 2 Nello spazio scavato stendere uno strato di ghiaia fine o sabbia.  
Fill the excavated hole with fine gravel or sand. Level the surface.
- 3 Posiziona le piastrelle controllando che siano piane e stabili.  
Set tiles into position and ensure they are flat and stable.

**A COLLA SU MASSETTO** · Laying on a screed with adhesive



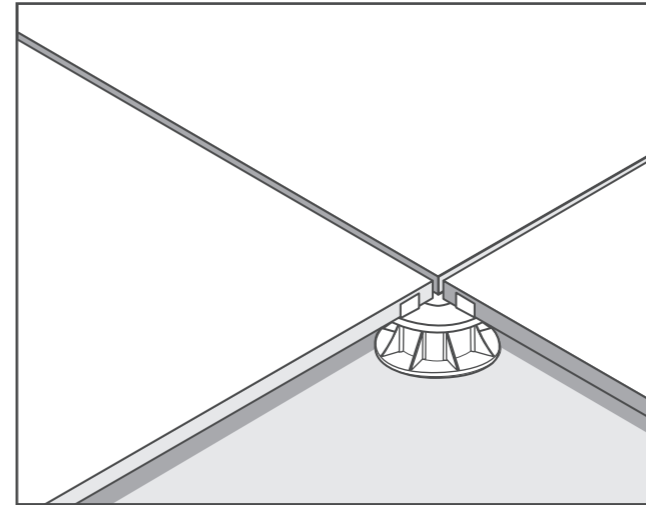
Posa tradizionale a colla ideale per i contesti in cui la superficie viene sottoposta a sollecitazioni intense. Particolarmente indicata per le zone carrabili, garantisce una pavimentazione stabile e duratura senza spostamenti.

Traditional adhesive technique ideal for environments where the surface is subject to intense and prolonged stress. Particularly suitable for driveway areas, it ensures stable and durable paving without shifting.

**Suggerimenti · Tips**

- 1 Pulire il massetto e stendere l'adesivo su entrambe le superfici.  
Clean the screed and apply two layers of adhesive, one for each surface.
- 2 Posa le piastrelle. Crea fughe utilizzando distanziatori di almeno 5mm.  
Lay the tiles. Create the joints using spacers of at least 5mm.
- 3 Dopo la posa, fissare le piastrelle con uno stucco adeguato.  
After laying, set the tiles with appropriate grouting material.

**POSA SOPRAELEVATA** · Floating installation



La posa sopraelevata è un'installazione senza collanti che si avvale di appositi piedistalli per rialzare la pavimentazione rispetto alla base, creando al di sotto uno spazio ispezionabile per il passaggio di impianti elettrici / idraulici o per il drenaggio dell'acqua.

Floating installation is a non-adhesive system that uses specialized pedestals to raise the floor surface, creating a gap underneath that can be easily used to route electrical cables / pipes or for water drainage.

**Suggerimenti · Tips**

- 1 Pulire le fondamenta e posizionare i supporti.  
Clean the substrate and place the supports.
- 2 Posizionare cavi e tubi (se necessario) e montare le piastrelle sui supporti.  
Position cables and pipes if required and place tiles on supports.
- 3 Durante l'installazione controllare e correggere la planarità.  
During installation, regularly check and adjust the planarity.

**Avvertenza.** Queste linee guida non tengono conto di tutte le variabili di cantiere e sono pertanto fornite a titolo di esempio. Per eseguire un'installazione sicura e corretta consigliamo di rivolgersi ai professionisti e di fare sempre riferimento alle normative vigenti nel proprio paese.

**Warning.** These guidelines do not take into account all construction site variables and are therefore provided as examples. To carry out a safe and proper installation, it is advisable to always consult a professional and refer to the current regulations in your country.

**IMBALLI**

Packaging / Emballages / Verpackungen / Упаковка

	Mq/Box	Pcs/Box	Kg/Box	Mq/Pallet	Box/Pallet	Kg/Pallet
Fondo 61x61 - 24"x24"	0,74	2	30,94	22,20	30	928,20
Fondo 60x90 - 24"x36"	0,54	1	22,90	24,30	45	1030,50
Fondo 30x122 - 12"x48"	0,73	2	32,50	26,28	36	1170,00
Elemento a L - 30x61x5 - 12"x24"x2"		1	8,90			
Elemento a L - 60x90x5 - 24"x36"x2" (lato 90)		1	24,80			
Elemento a L - 60x90x5 - 24"x36"x2" (lato 60)		1	24,20			
Elemento a L - 30x122x5 - 12"x48"x2" (lato 122)		1	19,00			
Elemento a L - 30x122x5 - 12"x48"x2" (lato 30)		1	17,00			
Elemento a L Angolare 30x30x5 - 12"x12"x2"		1	5,00			
Elemento a L Angolare A-B 60x90x5 - 24"x36"x2"		1	24,80			
Elemento a L Angolare A-B 30x122x5 - 12"x48"x2"		1	19,64			
Gradino 30x61 - 12"x24"		1	7,60			
Gradino 60x90 - 24"x36"		1	22,90			
Gradino 30x122 - 12"x48"		1	16,25			
Gradino Angolare 30x30 - 12"x12"		1	3,70			
Gradino Angolare A-B 60x90 - 24"x36"		1	22,90			
Gradino Angolare A-B 30x122 - 12"x48"		1	16,25			

## CARATTERISTICHE TECNICHE

Technical features / Caracteristiques techniques / Technische Eigenschaften / Технические характеристики

	<b>Metodo di prova</b> <b>Testing method</b> <b>Teste d'essai</b> <b>Prüfmethode</b> <b>Методика испытаний</b>	<b>Valore</b> <b>Value</b> <b>Valeur</b> <b>Wert</b> <b>Величина</b>
<b>UNI EN ISO 14411 BIa A. G GL</b>		
Assorbimento acqua Water absorption Absorption d'eau Wasseraufnahme Водопоглощение	ISO 10545.3	< 0,5 %
Resistenza alla flessione Bending strength Résistance à la flexion Biegezugfestigkeit Стойкость к изгибу	ISO 10545.4	Conforme
Resistenza all'attacco chimico Chemical resistance Résistance à l'attaque chimique Beständigkeit gegen Chemikalien Стойкость к химическому воздействию	ISO 10545.13	A
Resistenza alle macchie Stain resistance Résistance aux taches Fleckenbeständigkeit Стойкость к образованию пятен	ISO 10545.14	5
Anti scivolosità Anti-slip index Coéfficient anti-dérapage Trittsicherheitskoeffizient Характеристики устойчивости к скольжению	DIN 51130 DIN 51097 ANSI A 137.1:2012	R11 A+B+C >0,42 wet
Resistenza all'abrasione Resistance to abrasion Résistance à l'abrasion Abriebhärte Стойкость к истиранию	ISO 10545.7	PEI 5
Determinazione della resistenza al gelo Frost resistance index Coefficient de résistance au gel Feststellung der Frostbeständigkeit Определение морозостойкости	ISO 10545.12	Ingelivo Frost proof Ingelif Frostsicher Морозостойкая

**SETTECENTO**  
MANIFATTURA CERAMICA

Ceramiche Settecento Valtresinaro S.p.A.

Via del Crociale, 21 - 41042 Fiorano Modenese (MO)

Tel. +39 0536 928711 - Fax +39 0536 928718

www.settecento.com - e-mail: info@settecento.com

  
Ceramics of Italy

