

Collezione

NORDIC STONE

GRES PORCELLANATO RETTIFICATO



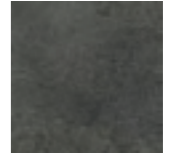
This collection represents in a modern key the essential taste and the smooth surface of Scandinavian stones aged by ice, wind and time. Light veins, a soft and likeable touch are the main features of this glazed porcelain available in 4 different sizes all rectified.

Cette collection est une interprétation contemporaine du goût essentiel. La surface propre et simple des pierres scandinaves, aiguisé avec de la glace, du vent et par le temps. Une touche douce et polie caractérise ce grès cérame émaillé disponible en 4 tailles rectangulaires.

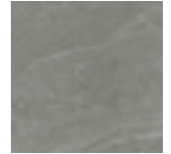
Diese Serie interpretiert in aktualisierter Form den ganz eigenen Geschmack und die reine und schlichte Oberfläche skandinavischer Natursteine, die von Eis, Wind und Wetter geschliffen wurde. Leichte, harmonische Aderungen, eine angenehme, weiche Haptik kennzeichnen dieses glasierte Feinsteinzeug, das in 4 rektifizierten Formaten erhältlich ist.

Данная коллекция представляет в современном ключе чистоту и простоту скандинавского камня отшлифованного льдом, ветром и временем. Лёгкие вены, мягкость и характеризуют этот глазурованный ректифицированный керамогранит в 4 форматах.

BLACK



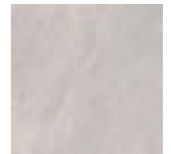
ANTHRACITE



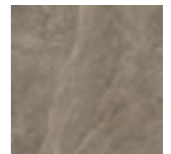
GREY



SAND



GREIGE



WHITE



80x80
32"x32"

40x80
16"x32"

60x60
24"x24"

30x60
12"x24"

La collezione interpreta con attualità il gusto essenziale e la superficie pulita e semplice delle pietre scandinave levigate dal ghiaccio, dal vento e dal tempo. Leggere venature, un tocco morbido ed educato caratterizzano questo Gres Porcellanato smaltato disponibile in 4 formati rettificati.

GRES PORCELLANATO RETTIFICATO

**NORDIC
STONE**



White 80x80 . Brick Black 9,8x29,9



Greige 80x80





Anthracite 60x60



Grey 80x80



Greige 60x60 . Greige 29,9x60 . Bacchette Greige 2,3x60



Mosaico White 3,1x3,1





White 80x80 . "Sketches" Vert Charcoal 10x20



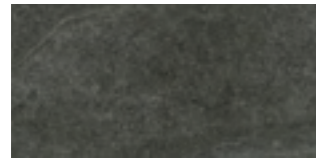
White 60x60 . Mosaico Musiva Grigio Argento 2,2x2,2



NORDIC STONE



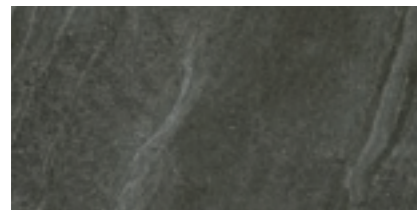
BLACK



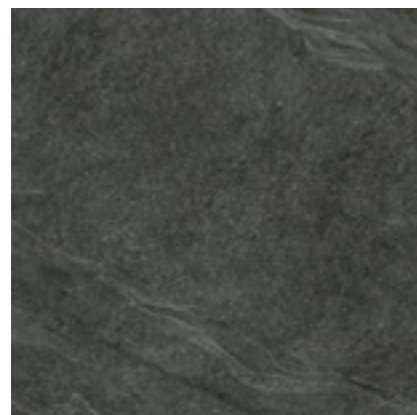
47 171026 black 29,9x60



47 171016 black 60x60

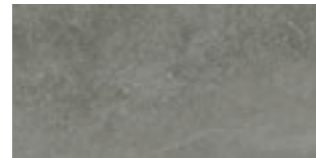


65 171046 black 40x80

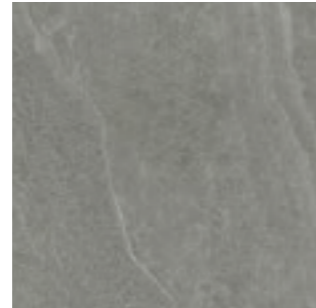


65 171036 black 80x80

ANTHRACITE



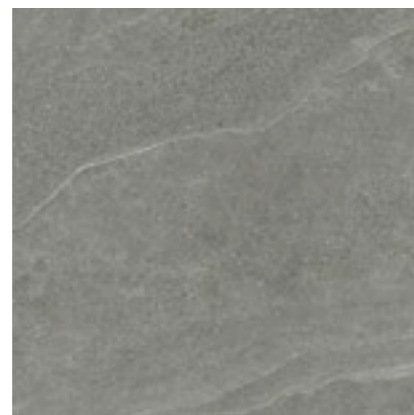
47 171025 anthracite 29,9x60



47 171015 anthracite 60x60



65 171045 anthracite 40x80



65 171035 anthracite 80x80

GREY



47 171024 grey 29,9x60



47 171014 grey 60x60
49 171054 grey 60x60 GRIP

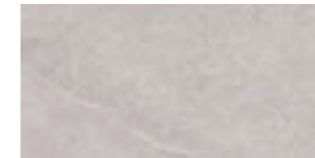


65 171044 grey 40x80

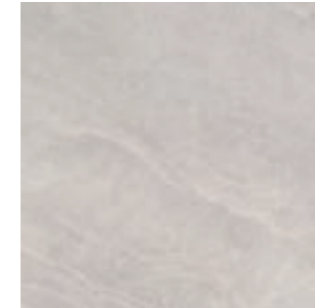


65 171034 grey 80x80

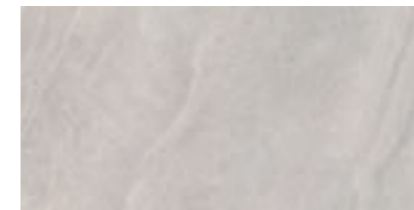
SAND



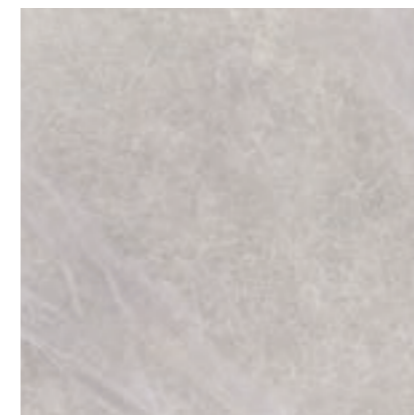
47 171021 sand 29,9x60



47 171011 sand 60x60
49 171051 sand 60x60 GRIP

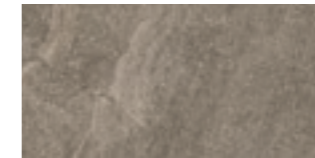


65 171041 sand 40x80



65 171031 sand 80x80

GREIGE



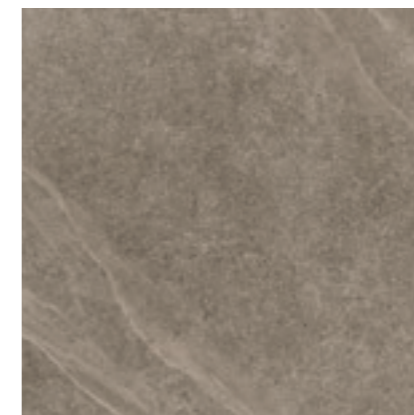
47 171022 greige 29,9x60



47 171012 greige 60x60

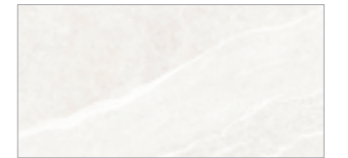


65 171042 greige 40x80

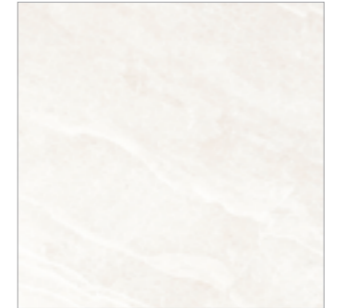


65 171032 greige 80x80

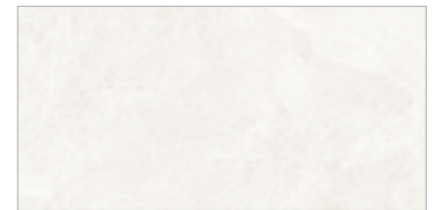
WHITE



47 171023 white 29,9x60



47 171013 white 60x60



65 171043 white 40x80

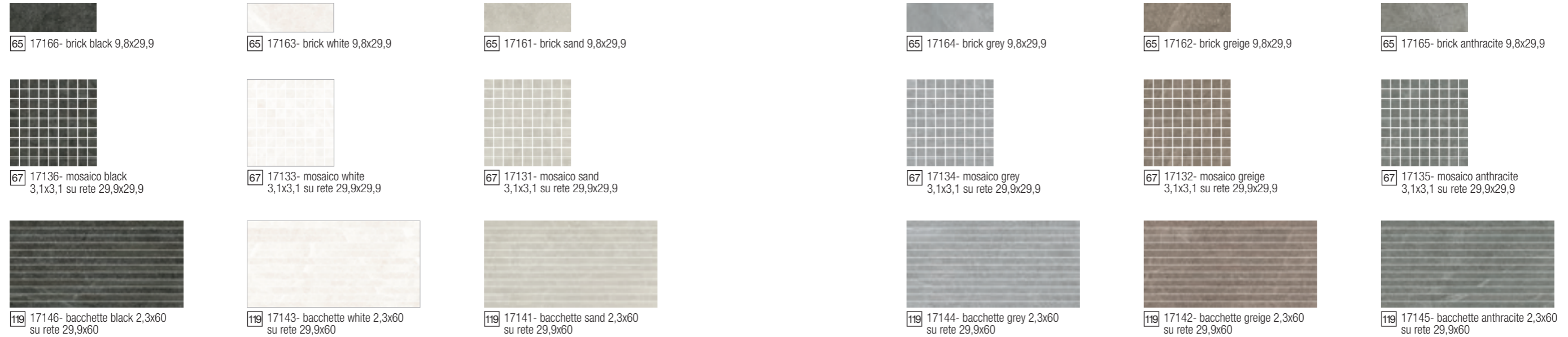


65 171033 white 80x80

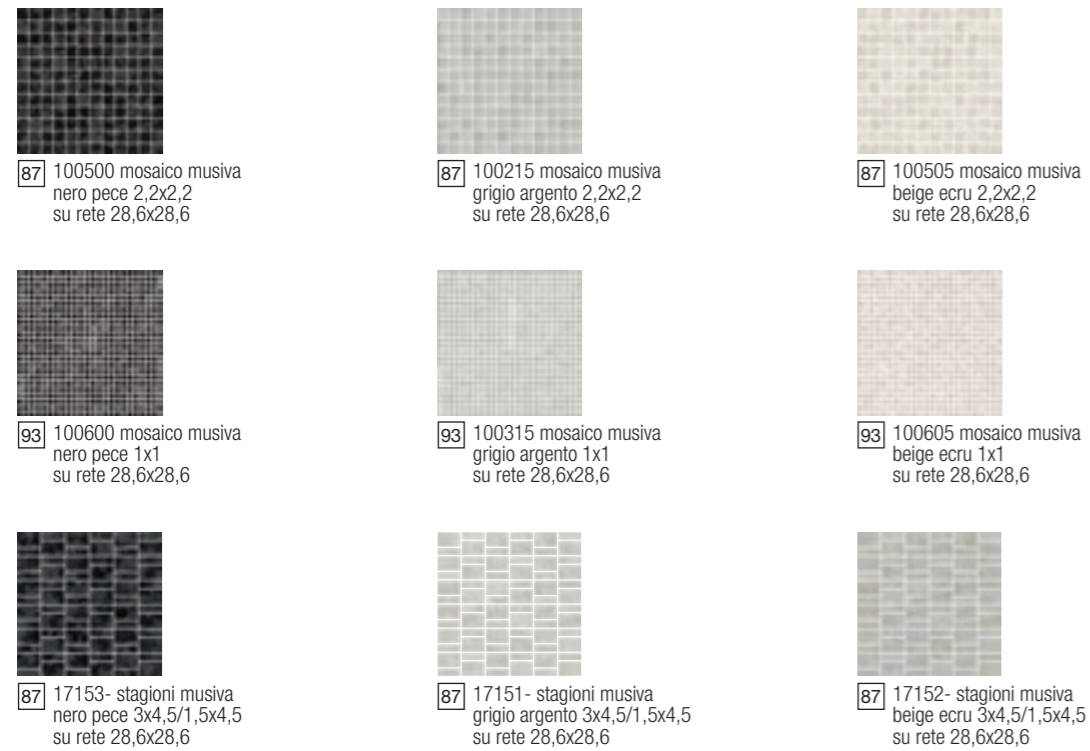
NORDIC STONE



Mosaici Mosaic . Mosaik . Dekore . Декоры

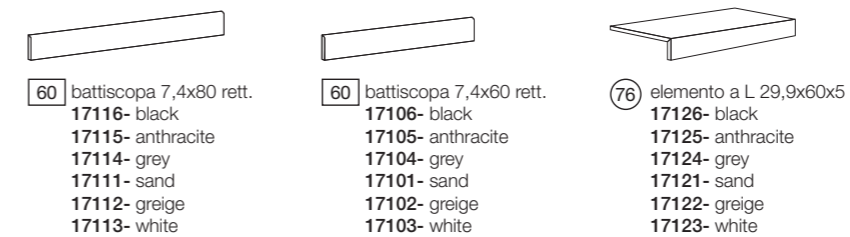


Mosaici Musiva Mosaic Musiva . Mosaik Musiva . Dekore Musiva . Декоры Musiva



Pezzi Speciali

Trims . Pièces Spéciales . Formstücke . Специальные изделия










Caratteristiche tecniche Technical features . Caracteristiques techniques Technische Eigenschaften . Технические характеристики UNI EN ISO 14411 Bla A. G GL		Metodo di prova Testing method Teste d'essai Pruefmethode Методика испытаний	Valore Value Valeur Wert Величина	
	Assorbimento acqua Water absorption Absorption d'eau Wasseraufnahme Водопоглощение	ISO 10545.3	< 0,5 %	
	Resistenza alla flessione Bending strength Résistance à la flexion Biegezugfestigkeit Стойкость к изгибу	ISO 10545.4	Conforme	
	Resistenza all'attacco chimico Chemical resistance Résistance à l'attaque chimique Beständigkeit gegen Chemikalien Стойкость к химическому воздействию	ISO 10545.13	A	
	Resistenza alle macchie Stain resistance Résistance aux taches Fleckenbeständigkeit Стойкость к образованию пятен	ISO 10545.14	5	
	Anti scivolosità Anti-slip index Coefficient anti-dérapage Trittsicherheitskoeffizient Характеристики устойчивости к скольжению	DIN 51130 DIN 51097 ANSI A 137.1:2012	NATURALE R10 A+B >0.42 wet	GRIP R11 A+B >0.42 wet
	Resistenza all'abrasione Resistance to abrasion Résistance à l'abrasion Abriebhärte Стойкость к истиранию	ISO 10545.7	PEI V	
	Determinazione della resistenza al gelo Frost resistance index Coefficient de résistance au gel Feststellung der Frostbeständigkeit Определение морозостойкости	ISO 10545.12	Ingelivo. Frost proof Ingelif. Frostsicher. Морозостойкая.	



Tabella imballi Packaging . Emballages Verpackungen . Упаковка	Mq x Scat.	Pz x Scat.	Kg x Scat.	Mq x Pall.	Scat. x Pall	Kg x Pall.
Fondo 60x60 rett.	1,080	3	23,60	43,20	40	944,00
Fondo 29,9x60 rett.	1,080	6	23,60	43,20	40	944,00
Fondo 80x80 rett.	1,280	2	27,50	51,20	40	1100,00
Fondo 40x80 rett.	0,960	3	23,70	53,76	56	1327,20
Battiscopa 7,4x60 rett.	7,200ML	12	11,64			
Battiscopa 7,4x80 rett.	8,000ML	10	13,88			
Elemento ad L 29,9x60x5		4	18,22			
Brick 9,8x29,9	0,586	20	13,00			
Mos. 3,1x3,1 su rete 29,9x29,9	0,536	6	11,72	18,22	34	398,48
Bacchette 2,3x60 su rete 20x60	0,718	4	14,60			
Mos. Mus. 2,2x2,2/28,6x28,6	0,490	6	9,00	16,66	34	306,00
Mos. Musiva 1x1/28,6x28,6	0,490	6	7,50	16,66	34	255,00
Stagioni Musiva su rete 28,6x28,6	0,490	6	8,40	16,66	34	285,60



Ceramiche Settecento Valtresinaro S.p.A.
Via del Crociale, 21 - 41042 Fiorano Modenese (MO)
Tel. +39 0536 928711 - Fax +39 0536 928718
www.settecento.com - e-mail: info@settecento.com

